

HOW TO MEASURE FOR ENTRY DOOR SYSTEMS

IMPORTANT! PLEASE READ

PROPER MEASUREMENTS ARE EXTREMELY IMPORTANT FOR ORDERING A NEW ENTRY DOORS SYSTEM

NOTE THAT "BRICK TO BRICK" MEASUREMENT ALONE IS NOT ENOUGH!

Referring to the diagrams shown on Page 3, you will note that you must specify to us the "rough stud opening" as this is where the door frame fits into. The rough stud opening, or R.S.O. for short, can easily be measured by removing the interior "casing moulding", to expose the wall studs and existing door frame. The Width *and* Height must be specified. From this, you must specify to us what "frame size" you will require. See the sizing charts on the following page to find the closest "standard" size which can be fitted.

If your outside wall is siding, or brick/block (double brick) construction, you may not need to order your system with brick moulding on the exterior. A box frame of the proper depth, either 4 5/8" or 6 5/8" as required, may be sufficient in these cases. Also note that depending on the construction of your sub-sill, you may need to order sill or threshold extensions. Regular door sills when used with brickmould are usually 1" deeper than the jamb width.

STEEL ENTRY DOOR SYSTEMS FRAME & BRICKMOULD SIZE CHARTS

NOTE: SIZES SHOWN ARE NOMINAL, WITHIN A TOLERANCE OF $\pm 1/4$ "

Frame Height: 81 1/2"
Sidelite Frame Widths: 13 1/4" - 15 1/4" - 18 1/4"
For Brickmould WIDTH, add 1 3/4" to frame widths. For Brickmould HEIGHT, add 7/8" to Frame Height

SINGLE DOOR SYSTEMS - WITH STANDARD STEEL SIDELITE PANELS

Nominal Door Width	Door Only		Nominal Door Width	Door + 1 HINGED Sidelite		
	Frame	Brickmould		12" Sidelite	14" Sidelite	17" Sidelite
30"	31.25	33	30"	44.25	46	49
32"	33.25	35	32"	46.25	48	51
34"	35.25	37	34"	48.25	50	53
36"	37.25	39	36"	50.25	52	55

Nominal Door Width	Frame Size: Door + 1 Sidelite			Frame Size: Door + 2 Sidelites		
	12" Sidelite	14" Sidelite	17" Sidelite	12" Sidelite	14" Sidelite	17" Sidelite
30"	44.75	46.5	49.5	58.25	61.75	67.75
32"	46.75	48.5	51.5	60.25	63.75	69.75
34"	48.75	50.5	53.5	62.25	65.75	71.75
36"	50.75	52.5	55.5	64.25	67.75	73.75

SINGLE DOOR SYSTEMS USING S-11 (KICK PANEL) SIDELITES WITH STANDARD 7" x 64" GLASS

These so-called "Direct-Set" Sidelites, *with custom-size glass*, can provide for any custom width you require

Nominal Door Width	Door + One Sidelite		Door + Two Sidelites	
	Frame	Brickmould	Frame	Brickmould
30"	40	41.75	48.75	50.5
32"	42	43.75	50.75	52.5
34"	44	45.75	52.75	54.5
36"	46	47.75	54.75	56.5

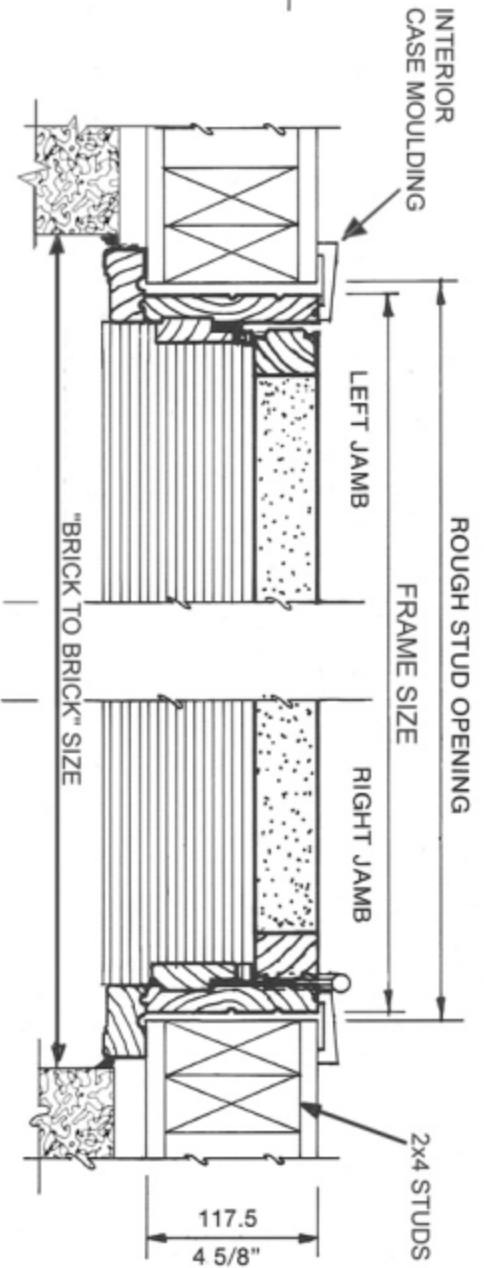
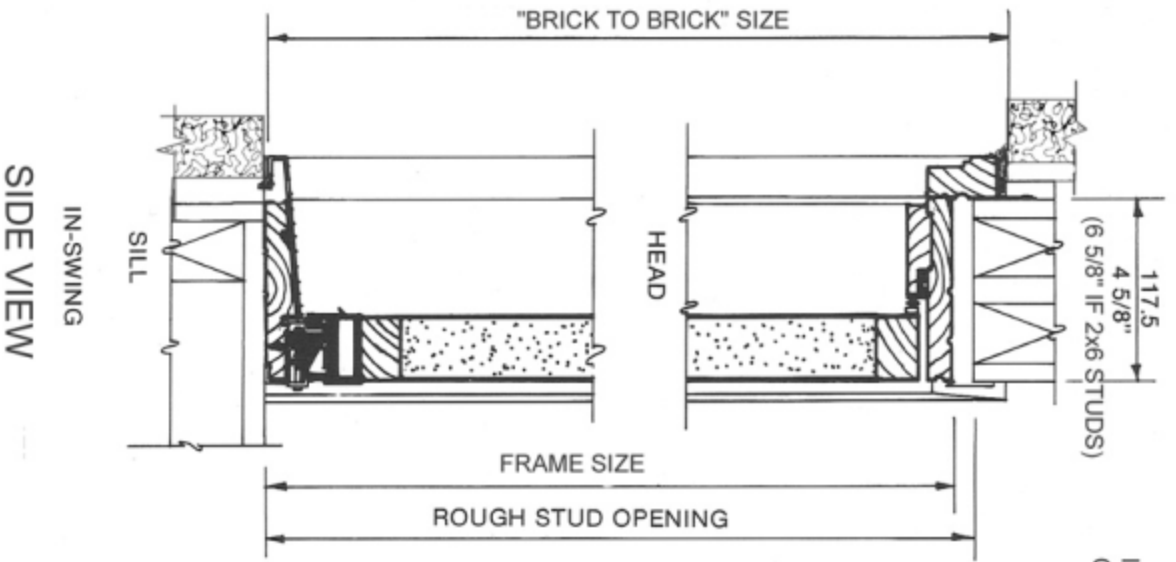
DOUBLE DOOR SYSTEMS

Nominal Door Width	Double Door Only		2-Door + 2, 14" Sidelites	
	Frame	Brickmould	Frame	Brickmould
30"	62	63.75	92.5	94.25
32"	66	67.75	96.5	98.25
34"	70	71.75	100.5	102.25
36"	74	75.75	104.5	106.25

TYPICAL ENTRY DOOR INSTALLATION IN COMMON BRICK VENEER WALL

SCALE = 1:5

(APPROX. 3" = 1'-0")



TOP VIEW

****NOTE:** with this type of wall, the brick to brick size is typically larger than the rough stud opening by approx. 2" in width and 1" in height. This is most important when measuring for a new entry system. Always remove the interior casing to measure rough stud opening before ordering

DOOR HANDING VARIATIONS - TOP VIEWS ARE SHOWN:

